

CANSALÀ I BOTIFARRES



CERCAVILA PER A DOLÇAINES I TABALS



ARTUR PUCHALT

CANSALÀ I BOTIFARRES

(Cercavila)

Artur Puchalt

$\text{♩} = 120$

Dolçaina 1

Dolçaina 2

Tabal

Redoblant

12

24

38

1. 2.

49

1. 2. D.C.

CANSALÁ I BOTIFARRES

Dolçaina 1

(Cercavila)

Artur Puchalt

$\text{♩} = 120$

14

28

41

54

1.

2.

D.C.

CANSALÁ I BOTIFARRES

Dolçaina 2

(Cercavila)

Artur Puchalt

$\text{♩} = 120$

13

26

39

53

1. 2.

1. 2. D.C.

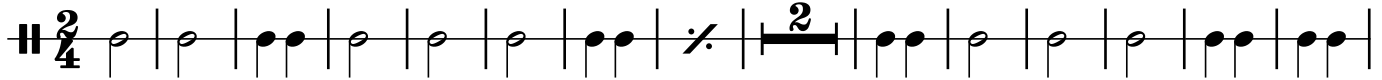
CANSALÁ I BOTIFARRES

Redoblant

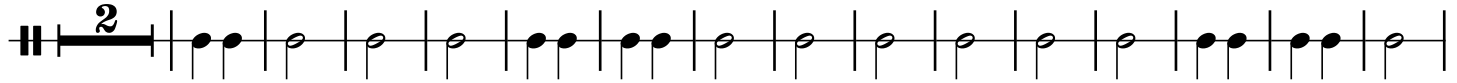
(Cercavila)

Artur Puchalt

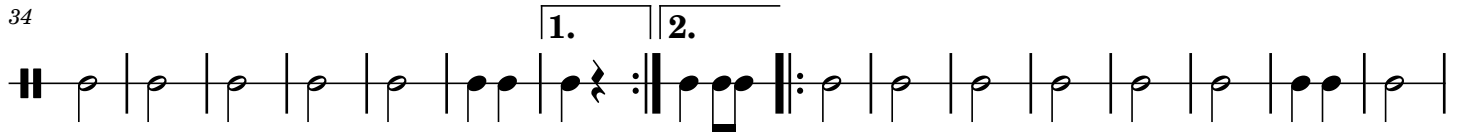
$\text{♩} = 120$



17



34



50

